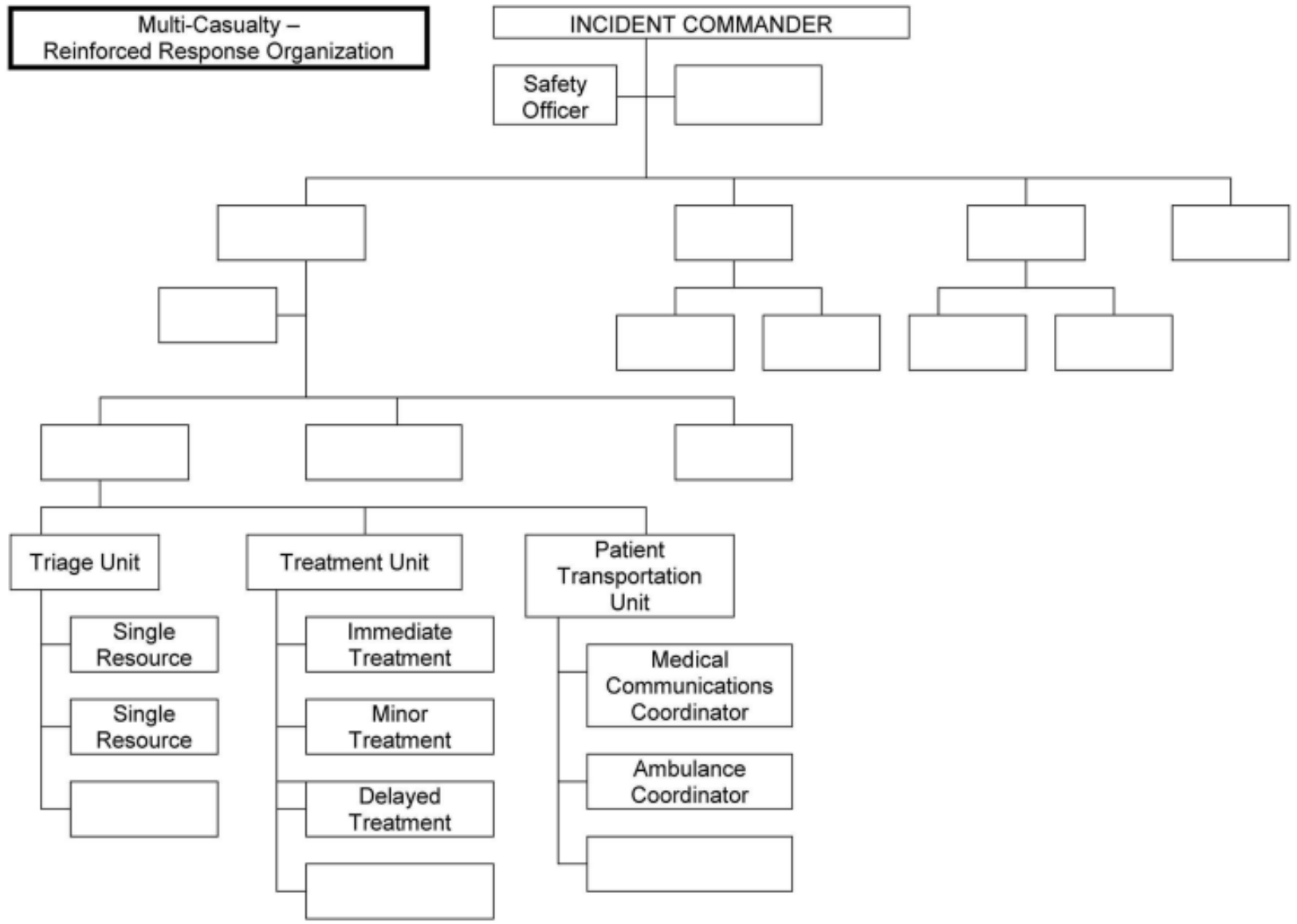
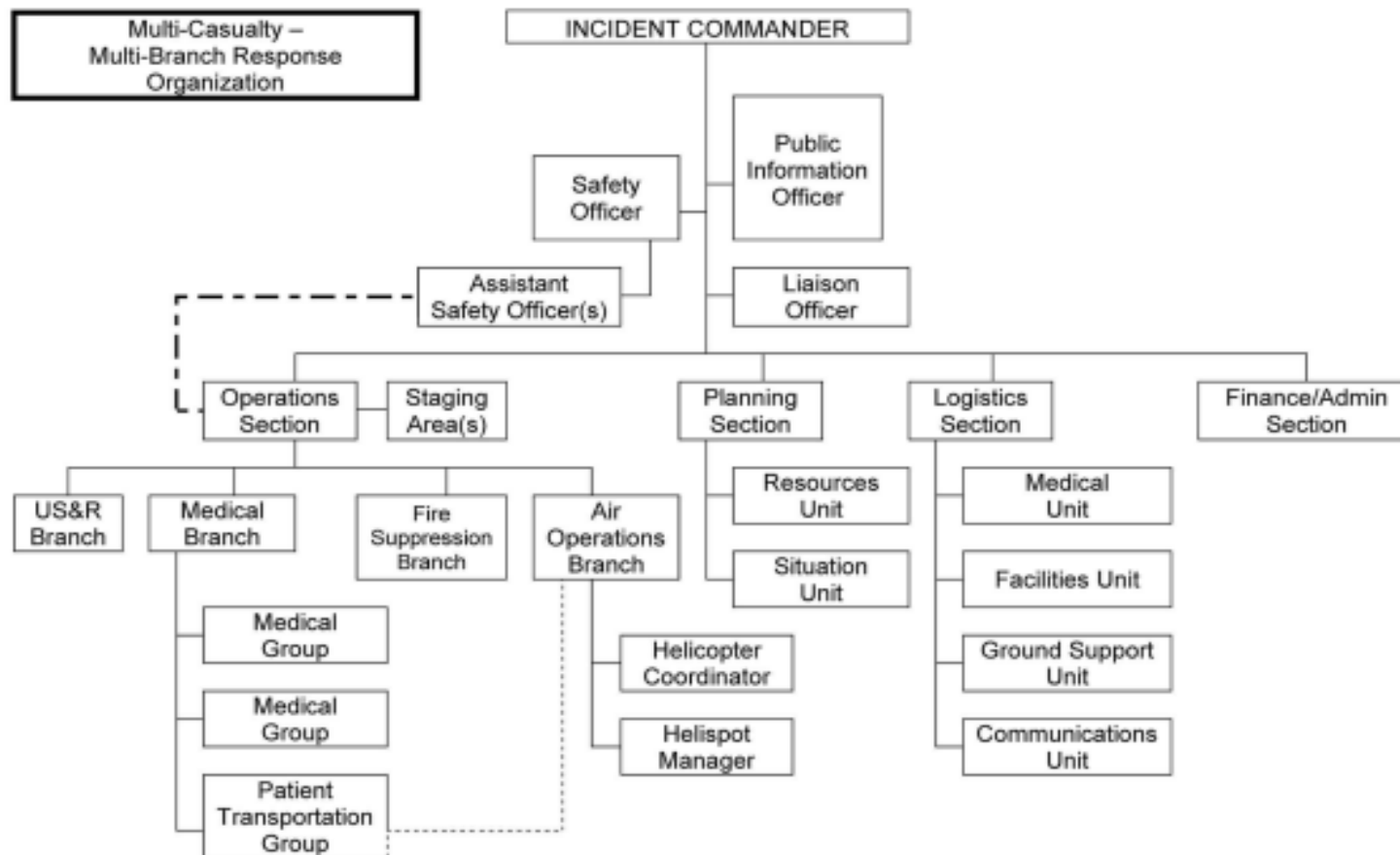


Multi-Casualty Initial Response Organization: The Incident Commander manages initial response resources as well as all Command and General Staff responsibilities. The Incident Commander assigns a resource with the appropriate communications capability as the Medical Communications Coordinator to establish communications with the appropriate hospital or other coordinating facility. In addition, the Incident Commander assigns a Triage Unit Leader, establishes treatment areas, and assigns an Ambulance Coordinator.



Multi-Casualty Reinforced Response Organization: In addition to the initial response, the Incident Commander establishes a Safety Officer, a Treatment Unit Leader, a Patient Transportation Unit Leader and Ambulance Coordinator, Immediate, Delayed, and Minor Treatment Areas are established and staffed. Ambulance Strike Teams may be requested to support local resources.



Multi-Casualty Multi-Branch Response Organization: The complete incident organization shows the Medical Branch and other Branches. The Medical Branch has multiple Medical Groups due to incident complexity, but only one Patient Transportation Group. This is because all patient transportation must be coordinated through one point to avoid overloading hospitals or other medical facilities.